

# **INDOFINE Chemical Company, Inc.**

121 Stryker Lane, Bldg. 30, Suite 1 • Hillsborough, NJ 08844 • U.S.A.

Phone: (908) 359-6778 • FAX: (908) 359-1179

website: [www.indofinechemical.com](http://www.indofinechemical.com)

e-mail: [chemical@indofinechemical.com](mailto:chemical@indofinechemical.com)

## CERTIFICATE OF ANALYSIS

Catalog number: 021055S

Product name: **HOMOORIENTIN with HPLC**  
(Isoorientin, Luteolin-6-C-glucoside)

CAS Number: [4261-42-1]

Lot Number: 2305796

Chemical Formula: C<sub>21</sub>H<sub>20</sub>O<sub>11</sub>

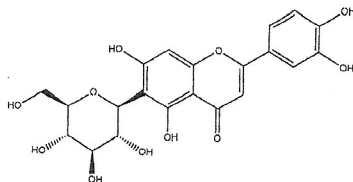
Molecular Weight: 448.38

Appearance: Yellow powder

Water Content: 0.8%

Storage: Store in cool, dry place. Protect from light.

Purity(HPLC): 99.4%



Prepared by:  
*Ramesh Mandadi*  
Ramesh Mandadi  
Director of Operations

Reviewed and Approved by:  
*Sujata Moton*  
Sujata Moton  
VP

# ICG **INDOFINE Chemical Company, Inc.**

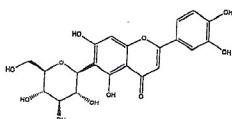
121 Stryker Lane, Bldg. 30, Suite 1 • Hillsborough, NJ 08544 • U.S.A.

Phone: (908) 359-6778 • FAX: (908) 359-1179

website: [www.indofinechemical.com](http://www.indofinechemical.com)

e-mail: [chemical@indofinechemical.com](mailto:chemical@indofinechemical.com)

## HPLC ANALYSIS

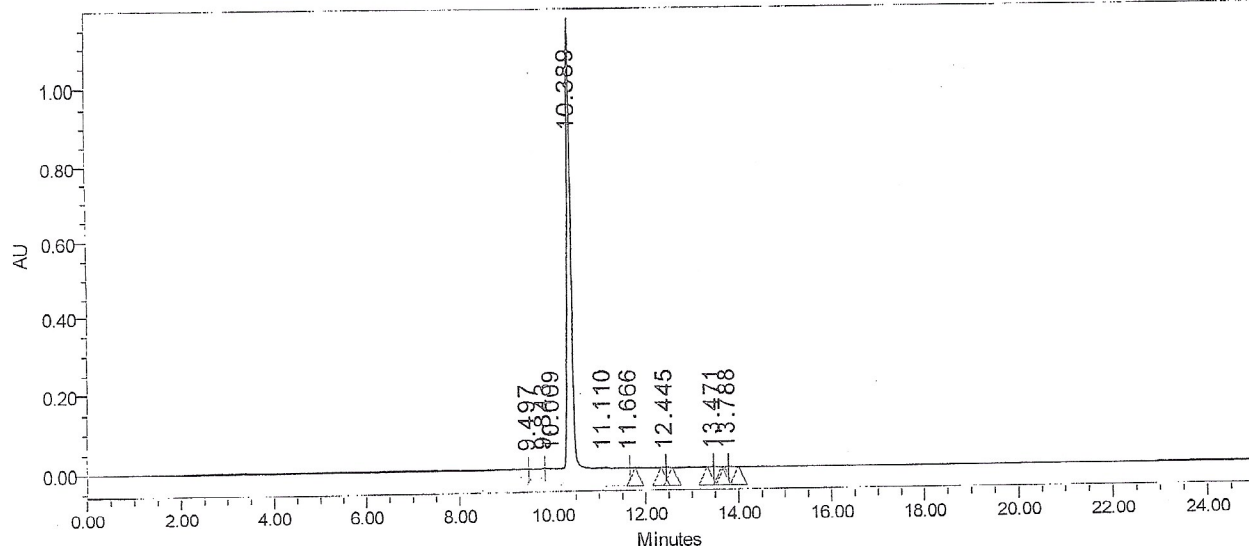


Catalog No.: 021055S  
 Product Name: Homoorientin  
 Lot No.: 2305796

### SAMPLE INFORMATION

Sample Name:	Isoorientin	Acquired By:	
Sample Type:	Unknown	Sample Set Name	
Vial:	70	Acq. Method Set:	Isoorientin
Injection #:	1	Processing Method	sample
Injection Volume:	5.00 ul	Channel Name:	PDA Ch1 350nm@4.8nm
Run Time:	25.0 Minutes	Proc. Chnl. Descr.:	PDA Ch1 350nm@4.8nm

Auto-Scaled Chromatogram



Peak Results

	Name	RT	Area	% Area	Height (µV)	USP Plate Count	USP Resolution
1		9.497	1914	0.03	358	69325.75	
2		9.843	18674	0.28	3383	74502.28	2.35
3		10.009	4746	0.07	551		
4		10.389	6729757	99.36	1141494	74980.32	
5		11.110	11268	0.17	1208	71193.54	
6		11.666	2091	0.03	396	83764.99	
7		12.445	1986	0.03	334	94363.88	4.88
8		13.471	1214	0.02	182	101472.17	5.88
9		13.788	1545	0.02	275	152452.77	1.92